

Brush Piles



NBPP's Refrigerator Door Companion

Summer 1993

NORTH BRANCH STEWARDS MEET WITH CONSULTANT TOM VANDERPOEL: A REPORT

Nancy Freehafer

Last summer funding from the Cook County Forest Preserve made it possible for the North Branch to hire consultant Tom Vanderpoel to walk our restoration sites and to discuss management plans with stewards. Tom is a landscaping consultant and a regional ecologist in the Volunteer Stewardship Network. He has been interested in our work for a long time.

By all accounts, the discussions were very productive. Tom said he was delighted with the restoration on the North Branch sites. He saw "tremendous visual progress," especially on sites that have been under management for 7-8 or more years. He said it was inspiring to him to talk to all of the dedicated stewards, and he praised our management techniques.

As for the stewards, they found it helpful to hear a fresh view from someone who has not been closely associated with the sites. Tom comes with experience from outside the North Branch area; he has a wide knowledge of other sites and of the ways that others have solved particular problems. In addition, the stewards found that preparing for an "outsider" to come was an impetus for focusing their own thoughts and plans.

The walks and talks with Tom resulted in dozens of pages of notes. To summarize briefly, Tom expressed two primary concerns.

One concern was that the savanna areas don't seem to be reaching self-sufficiency, even after several years of management. Weedy plants, like tall goldenrod and Canada thistle, are increasing. Tom's feeling was that since we don't yet seem to have the right matrix of native plants to keep these weeds out, we might try to create a temporary ground cover, possibly of weak Eurasian grasses, which would serve as a fuel base for fire and which would eventually be replaced by a combination of grasses, sedges and forbs. In this context, he also suggested that we concentrate more on getting sedges and conservative grasses into the savanna areas, creating a stronger web of roots that will prevent competition from weeds.

Tom's second suggestion was that in some areas we begin to use power tools—brush whackers and chain saws and the like. This practice will help us to move more quickly in areas that have been growing over faster than we can get to them. As Drew Ullberg pointed out, we currently have so many sites that

even with more and more volunteers, some sites will get only a handful of workdays each year. A judicious use of power tools could help to preserve more ecosystems and endangered species. It could also free up volunteers for new projects, such as working in and around the vernal ponds or restoring insect, reptile, and amphibian populations on many sites at Somme Woods.

Both strategies—the use of power tools and the planting of Eurasian grasses in some areas—have been considered for a long time by North Branch stewards. Tom's visit seems to have been the impetus to employ both techniques on a limited basis. Current plans call for experimental plots of Eurasian grasses at the south end of Miami Woods Prairie, and for some use of power tools as well. In addition, the Ecological Management Workgroup is discussing Tom's other suggestions, including developing more specialized seed mixes and emphasizing work on micro-habitats, like vernal pools and oak knolls.

SUMMER WORDS OF WISDOM FROM THE BRUSHMEISTER:

Lopper Logistics

The brushmeister has, of late, been distracted by the warm breezes, the songs of birds, and the almost instant appearance of spring. Now, after coming back to his senses, he would just like to reiterate basic lopper safety, use, and interpretation.

In transporting loppers be sure they are well balanced in the carrying bag. The jaws should be centered on the bottom and the handles opened to either side of the bag handles. Don't be embarrassed to lighten the load if you find it will be uncomfortable to carry for 10-15 minutes.

Don't lop ANYTHING before double checking with the steward if you are unsure about cutting a particular sapling. It's OK to ask questions—as many as you would like!

Now, with lopper in hand and your chosen sapling before you, begin on firm ground; either kneel or bend deeply at the waist, whichever is most comfortable and steady for you. Open the lopper jaws fully and place them around the base of the sapling as low to the ground as possible. Smoothly—with a one-two count—bring the handles together. A level, low cut is safer for those who are walking where you have lopped. Also, herbicide runoff is greatly reduced.

Continued on page 4

NORTH BRANCH PRAIRIE PROJECT SUMMER WORKDAYS AND ACTIVITIES SCHEDULE

The NORTH BRANCH PRAIRIE PROJECT is working to restore and manage the few remaining prairie remnants along the North Branch of the Chicago River in the Cook County Forest Preserves. These areas, once part of a vast grassland ecosystem, are under tremendous pressure from urban development and non-native species. We are working to restore conditions that will allow these natural wild communities to flourish as a permanent part of the metropolitan area.

SUMMER 1993

June 5	Saturday	9:00 a.m.	Somme Nature Preserve
June 6	Sunday	9:00 a.m.	Miami Woods Prairie
June 12	Saturday	9:00 a.m.	Wayside and Railroad Prairie
June 13	Sunday	9:00 a.m.	Somme Woods
June 19	Saturday	9:00 a.m.	Buffalo Grove Prairie
June 20	Sunday	9:00 a.m.	Somme Sedge Meadow (Father's Day)
June 26	Saturday	9:00 a.m.	Oxbow Prairie (Bunker Hill)
June 27	Sunday	9:00 a.m.	Harms Woods
June 27	Sunday	1:30 p.m.	Harms Woods
July 3	Saturday	9:00 a.m.	Wayside and Railroad Prairie
July 4	Sunday	9:00 a.m.	Buffalo Grove Prairie
July 10	Saturday	9:00 a.m.	Somme Sedge Meadow
July 11	Sunday	9:00 a.m.	Bunker Hill Prairie
July 11	Sunday	1:30 p.m.	Watersmeet
July 17	Saturday	9:00 a.m.	Oxbow Prairie (Bunker Hill)
July 18	Sunday	9:00 a.m.	Somme Prairie Grove
July 18	Sunday	1:30 p.m.	Buffalo Grove Prairie
July 24	Saturday	9:00 a.m.	Harms Woods
July 25	Sunday	9:00 a.m.	Miami Woods Prairie
July 31	Saturday	9:00 a.m.	Miami Woods Prairie
August 1	Sunday	9:00 a.m.	Sauganash Prairie
August 7	Saturday	9:00 a.m.	Harms Woods
August 8	Sunday	9:00 a.m.	Somme Woods
August 8	Sunday	1:30 p.m.	Buffalo Grove Prairie
August 14	Saturday	9:00 a.m.	Harms Woods
August 15	Sunday	9:00 a.m.	Somme Sedge Meadow
August 15	Sunday	1:30 p.m.	Harms Woods
August 21	Saturday	9:00 a.m.	Miami Woods Prairie
August 22	Sunday	9:00 a.m.	RR/Wayside
August 28	Saturday	9:00 a.m.	Somme Sedge Meadow
August 29	Sunday	9:00 a.m.	Miami Woods Prairie

Directions

BUFFALO GROVE PRAIRIE (Buffalo Grove)—Turn north on Johnson Drive, which is the first light west of Milwaukee on Lake-Cook Road. Meet in the Cryovac lot, the first driveway on the west side of Johnson Drive. The prairie is under the Commonwealth

In the summer we cut brush and pull weeds. Always wear long pants and shirts with sleeves. Bring some water. Sun protection is important. We picnic after working so bring a lunch and something to share. The workday hotline is 312-878-3877.

NORTH BRANCH WORKGROUPS

The North Branch workgroups listed below need volunteers. Contact the chairperson for more information or attend a workgroup meeting. *The next Coordinating Committee meeting will be on Wednesday, June 9 at 7:30 p.m. at the home of Larry Hodak, 4455 N. Mozart, Chicago.*

Ecological Management

Jane and John Balaban, 708-679-4289.

Next Meeting: Wednesday, July 7 at 5143 W. Morse, Skokie.

Education/Volunteer Development:

Joanne Softcheck, 312-878-3877

Publications/Publicity:

Karen Holland, 312-929-7658.

Next meeting: Monday, July 19 at 2048 W. Melrose, Chicago.

Science:

Drew Ullberg, 312-631-0332

Next meeting: Thursday, June 24 at 5539 N. Central, Chicago.

EVENTS CALENDAR:

Somme Nature Preserve Birthday Party

Sunday, June 5, 9:00 a.m.-1:30 p.m.

Join the gala June 5th celebration of the anniversary of this site's designation as a dedicated Illinois Nature Preserve. We'll do restoration work from nine until noon. At lunch there'll be banjo playing by John Haugland (he's written a song about the North Branch) so bring a lunch and join in the fun. For directions, see the workday schedule.

REI Volunteer Workday

Somme Woods Trail Restoration Project, Sunday, June 5

9:00 a.m.-3:00 p.m.—work on Trail Project

1:00 p.m.-5:00 p.m.—National Trails Day Info. Fair

3:00 p.m.-5:00 p.m.—BBQ for Volunteers

drive-way on the west side of Johnson Drive. The prairie is under the Commonwealth Edison power lines.

BUNKER HILL/OXBOW (Chicago)—Meet at the Bunker Hill Forest Preserve parking lot on the west side of Caldwell Ave. about 1/4 mile north of Devon Ave.

HARMS WOODS (Glenview)—Meet at Forest Preserve Grove parking lot on the west side of Harms Rd., just south of Glenview Rd.

MIAMI-INDIGO (Morton Grove-Niles)—Meet at Miami Woods Prairie Forest Preserve parking lot on the east side of Caldwell Ave., two blocks north of Oakton Ave.

SAUGANASH PRAIRIE (Chicago)—Meet at the edge of the Forest Preserve along the south side of Bryn Mawr Ave. at Kilbourn Ave. (south of Peterson Ave. and east of Cicero Ave.)

SOMME NATURE PRESERVE (Northbrook)—Meet in the Post Office parking lot, Dundee and Western Avenues.

SOMME PRAIRIE GROVE, WOODS, AND SEDGE MEADOW (Northbrook)—Take Dundee Rd. two miles west from the Edens Expressway to Waukegan Rd. Go north a few hundred feet on Waukegan and meet at the unpaved parking area on the west side of the road.

WATERSMEET/SEDGE MEADOWS (Northfield)—Exit the Edens Expressway at Lake Avenue West. Go west to Wagner Rd., turn north then take Wagner to Winnetka Rd. Go east on Winnetka 3/4 mile. Park on the south side of the street.

WAYSIDE/RR PRAIRIE (Morton Grove)—Meet at Wayside Woods Prairie Forest Preserve parking lot on Lehigh Ave. (a few blocks east of Waukegan Rd. and just north of Dempster Ave.



IT'S SUMMERTIME—T-SHIRT TIME!

The “true people” of the North Branch can show their true colors by wearing their authentic North Branch 15th anniversary T-Shirts this summer. Remember—more than half of the purchase price is a contribution to support the North Branch’s restoration work.

T-shirts will be available for purchase at most of our summer workdays; or you can phone in your order for the North Branch Hotline (312/878-3877) and make special arrangements with Joanne.

REI, in cooperation with the Forest Preserve District of Cook County, will be leading a restoration/clean-up project on the Somme Woods hiking trail to recognize the first annual National Trails Day. Please wear long pants, a hat, sturdy shoes and bring a water bottle.

Directions: North side of Dundee Road, 1/2 mile east of Waukegan Road in Northbrook. For more information call 708-470-9090.

The Great Thismia Hunt, III

Saturday, July 31, 9:30 a.m.-7:00 p.m.

Location: Sand Ridge Nature Center, South Holland

Search for a long-lost plant collected in the Lake Calumet area by avid botanist Norma Pfeifer in the years 1912-1916, and not yet seen again. *Thismia* is a very low growing and thimble-sized plant, making the search even more fun. Join as we try to re-discover this prize of the region. You and your team will be given an area to search. Although *Thismia* hasn't been found in searches I and II, plenty of other interesting plant and non-plant life have been. Featured speaker, Gerould Wilhelm. Each participant will receive a copy of the checklist “Plants of the Illinois-Indiana Lake Plain.” 9:30 AM-7:00 PM, including a two-hour cookout.. Call 312-346-8166 to register.

Second Annual WILDERNESS DAY

Sunday, August 8

Location: Pulaski Woods West, 95th Street and Wolf Road
Call 708-366-9420 for more information.

PUT THIS DATE ON YOUR CALENDAR NOW!

Saturday, October 9

That's right! October 9! for the North Branch Nachusa Grasslands Workday and Campout. Preregister by calling Joanne at 312-878-3877. (Limit 25 people)

COMMITTEE ANNOUNCEMENTS

PLANNING COMMITTEE

We would like to extend an invitation to all persons interested in working on the Planning Committee to attend our next meeting on Wednesday, June 30th at 2048 W. Melrose. The planning committee is composed of an emergency response group, and a “proactive” group which is charged with finding preventative solutions to dangers threatening our sites. Don't be frightened by the word “Planning”, there is plenty of room for hands on types in our “Good Neighbor” Outreach Group! Call Chris Urban at 312-871-2827 for more information.

The **NORTH BRANCH READING GROUP** will meet the third Tuesday of each month. The next meeting: June 15, 7:30 p.m. 2534 N. St. Louis Ave. Please RSVP to Nancy Freehafer at 312-342-6665. *The End of Nature* by Bill McKibben will be reviewed.

Brush Pile Crew

Editing: Barbara Rose

Layout: Kathy and Chuck Lapinsky

CLASSES/LECTURES

VOLUNTEER STEWARDSHIP NETWORK

The Nature Conservancy,

79 W. Monroe, Suite 900, Chicago, Illinois 60603

Requirements: These courses are open to active stewards, co-stewards, and monitors in the Volunteer Stewardship Network. Preregistration is required for all classes. To do so, follow the instructions within each course description. *Only when no other instructions are given call 312-346-8166 to register.*

Lichen Identification. Saturday, June 12, 9:00 a.m.-Noon.

Location: Miami Woods Prairie.

Learn to field-identify lichens on the ground, on rocks, and on trees. Instructor: Rich Hyerczyk. Meet at parking lot. If raining, meet under the shelter. (Limit 12-15).

Landscape Geneology. Saturday, June 12, 9:00 a.m.-3:00 p.m.

Location: Sand Ridge Nature Center, South Holland.

This day long session will focus on one of the most critical, yet often overlooked, elements of successful natural areas management: researching and interpreting land-use history. Participants will be introduced to many resources rich in practical information for managers. These include sequential air photos, drainage district information, federal land survey notes, interior section notes, diaries, agricultural census records, tract indexing, early plat books, travelers journals, soil maps, and settlement gazetteers. After lunch, participants will try their hands at interpreting 150 years of human/land interaction on specific sites. Lists of sources for land use history in the six county area will be distributed to all participants. Instructor: Ed Collins.

Advanced Seminar for Chicago Region Herps Monitors: Emphasis on Field Work.

Saturday, June 19, starting at 9:00 a.m.

Location: TBA.

Visit Middle Fork Savanna, a site that is currently being monitored. This full day, comprehensive workshop will prepare people to become monitors of reptiles and amphibians. Participants will have the opportunity to view inventory techniques in use at an actual monitoring site. The classroom session will briefly discuss the use of maps and aerial photos, how to conduct a literature search and study design, and a variety of standard sampling methods. The field work will allow participants to get experience in using sampling methods and in evaluating a potential site. Instructors: Ken Mierzwa, Ellin Beltz, Robert Sliwinski, and Tom Anton.

Herbicide Workshop. Saturday, June 26, 9:00 a.m.-Noon at Camp Sagawau.

Saturday, July 10, 9:00 a.m.-Noon.

Location: TBA.

Topics covered in this practical workshop include: importance of using herbicides, choosing the right chemical and equipment, safety measures, effective application methods, timing of application, treatment of specific problem weeds, storage, and sources for material. Bring questions. Note: This is *not* an herbicide licensing class. Instructor: Ed Collins.

The Joy of Slides: Creating a Slide Show That Works. Two Wednesdays (both required), July 7 and 14, 7:00-9:00 p.m.

Location: The Nature Conservancy, 79 W. Monroe, Chicago, Room 619.

areas in northern and central Illinois. The data they have collected is proving to be extremely valuable in helping to evaluate the progress of the recovery of restoration sites. The presence or absence of some invertebrate species can be an important indicator of health. Currently, nearly fifty sites are being monitored, but more monitors are needed. This workshop is the field component follow-up to a March workshop. Instructors: Ron Panzer, Doug Taron, and Don Stillwaugh. *To register, call Doug at 708-695-4568.*

Wetland Plant Workshop.

Sunday, July 11 from 1:00-4:00 p.m. at Nelson Lake Forest Preserve in Kane County. I90 or I88 to Randall Rd to Main St just south of Batavia. Turn west 1.5 mi to Nelson Lake Rd., turn left meet in lot. **Sunday, August 15, 1:00-4:00 p.m. at Spring Creek Forest Preserve, Cook County.**

Learn to identify and classify wetland plants at a large and diverse wetland complex. Be prepared to get wet, and wear old sneakers that you won't mind losing. Instructor: Jim Anderson.

Natural Areas Restoration. Friday, July 16, 8:00 p.m.

Location: River Trail Nature Center, 3120 N. Milwaukee, Northbrook.

An illustrated talk by John Elliott of the Forest Preserve District of Cook County on natural areas in the Forest Preserves, what's being done to restore them, and how you can help. *Preregister by calling 708-824-8360.*

Identifying Grasses in the Field. Saturday, August 7, 10:00 a.m.-3:30 p.m.

Location: Emily Oaks Nature Center, Skokie.

Identifying grasses takes special knowledge and skill. This introduction to the family Graminae is designed to help you get a good start in mastering this difficult but important group of plants. We will be learning both prairie and savanna grasses using herbarium sheets and field examples. The emphasis will be on recognition by gestalt, not keying technical features. The morning will be spent in a classroom, and the afternoon will be spent in the field. Sack lunch recommended. Instructors: Jane and John Balaban and Laurel Ross.

Ecology and Management of the Eastern Tallgrass Prairie. Saturday, August 14, 10:00 a.m.-Noon.

Location: Sheridan Rd (1 mile north of border) to Tobin/116th Ave east, cross over the railroad tracks and you will see prairie. At the first dirt road take a right, go beyond signed entrance to parking area. Meet in lot.

Catch a walking tour of spectacular Chiwaukee Prairie in Wisconsin when the blazing stars are in bloom, led by a 22-year veteran of the prairie. Learn about the prairie's ecology (including hydrology) and management, preserve design and expansion plans which will connect the prairie to natural areas to the north and south. It is the largest virgin prairie in this area with tremendous vistas and a variety of ecosystems including prairie, savanna, fens and other wetlands. Instructor: Wayne Schennum.

Savanna Restoration and Management. Saturday, August 28, 9:00 a.m.-1:00 p.m.

Location: Danada Forest Preserve, DuPage Co. Entrance is on east side of Wheaton/Naperville Rd 1/4 mile south of Rt 56, 1/2 mile north of Ogden Ave and I88. Visit a 30-acre recently-restored savanna and learn about the restoration and management techniques used at this successful site. We will also view and discuss the

Designed for stewards and others who may find giving slide presentations a "necessary evil," this two-part workshop will cover both content and delivery. Participants will gain the tools needed to create an interesting presentation (or refine an existing one) as well as learn practical tips for improving performance. Instructor: Sandi Stein.

Making Management Decisions. Sunday, July 18, 9:00 a.m.-Noon. Location TBA. Sun. Aug 22, 9:00 a.m.- Noon at Camp Sagawau.

This classroom session will use small group and individual exercises to help managers sharpen their skills: in: a) recognizing management problems and restoration opportunities, b) preparing written plans in the form currently used by most public agencies, c) developing long-range management goals, and d) effectively dealing with landowners, neighbors, and the public. Instructor: Tom Vanderpoel.

Butterfly Monitoring Workshop, Part 2. Saturday, July 10, 10:00 a.m.-1:00 p.m. Since 1987, trained volunteers have been monitoring butterfly populations at natural

Natural Areas Quality Assessment: Field Techniques and Data Analysis.

Saturday, September 4, 9:00 a.m.-4:00 p.m.

Location: Harms Woods, Cook County.

This workshop is designed for people who plan to participate in plant-community transects for long-term monitoring of natural area quality. The morning exercise will explore field techniques. After lunch, participants (max 8) will learn how to apply the programs developed by Wilhelm and Wetstein using IBM compatible computer and Lotus 1-2-3 software. Instructors: Gerry Wilhelm and Linda Wetstein.

Mapping Natural Areas. Saturday, September 18, 9:00 a.m.- Noon

Location: Emily Oaks Nature Center, Skokie.

Mapping is one of the most important skills a steward can acquire. This workshop will introduce participants to the basics of map making, provide hands-on experience, and answer questions. It will also familiarize people with existing available resources such as air photos. No previous experience necessary. Instructor: Richard Carter.

FIELD PLANT IDENTIFICATION CLASS

at Miami Woods Prairie, Tuesday, August 3, 6:30 p.m.

Instructors: Laurel Ross, Susanne Masi

Designed for the serious plant identification student with some previous experience. Bring a favorite field guide, Swink & Wilhelm (if you have it), a pencil, notebook, and hand lens.

The class will include:

- Identification of flowers and grasses in the field;
- Learning to identify plants by flowers as well as other distinguishing characteristics;
- Participants will key out at least one plant;
- Worksheets and other appropriate materials will be provided.

Class size: Limit 15 Fee: \$2 per person

See directions under the Summer Workday Schedule

REGISTRATION

Name: _____

Address: _____

City, State, Zip: _____

Day Phone: _____ Night Phone: _____

Mail this completed form & your NPBB check to:

Joanne Softcheck, 4537 N. Hamilton, Chicago, IL 60625



NORTH BRANCH "WANT ADS"

The North Branch is looking for volunteers who would like to get involved in helping 1) to orient new volunteers at workdays; and 2) to increase our educational offerings.

ORIENTATION—Would you be interested in helping to revive a program for welcoming and orienting new volunteers at workdays? The idea is to have designated "Volunteer Orienters" at each workday to greet first-time volunteers and give them a brief, informal orientation about the work of the North Branch. We are also looking for North Branchers who would enjoy making follow-up phone calls to new volunteers; to thank them for coming out to help, to get feedback from them about their first workday experience, to answer any questions they might have, and to invite them back again.

EDUCATION—Would you be interested in helping to coordinate educational programs and/or tours for the North Branch? We want to offer more opportunities for volunteers, groups, and the general public to learn about prairies and savannas and the North Branch's restoration work, but need more help in administering this function.

If you have an interest in these areas and would like to find out more about what's involved, please call Joanne at 312/878-3877.

MIDWEST OAK SAVANNA CONFERENCE SPIRITED BY NORTH BRANCH VOLUNTEERS

One thousand people participated in the Midwest Oak Savanna Conference on February 20 at Northeastern Illinois University. The North Branch Prairie Project was present in force. **Laurel Ross**, **Glynis Zywicki**, **Steve Packard** and **Karen Holland** were on the organizing committee. **Joel Spears** designed the logo. **Ron Zywicki** prepared the logo copy layout and did the publicity work. **John Haugland** and **Spencer Rand** provided lunchtime music.

North Branch gave its share of the presentations too. **Jane** and **John Balaban** spoke on savanna grasses. **Steve Packard** gave a summary report on conservation of savannas and talked about restoring oak ecosystems. **Jerry Sullivan** talked on savanna birds. **Kent Fuller** gave a speech about involving local governments in restoration.

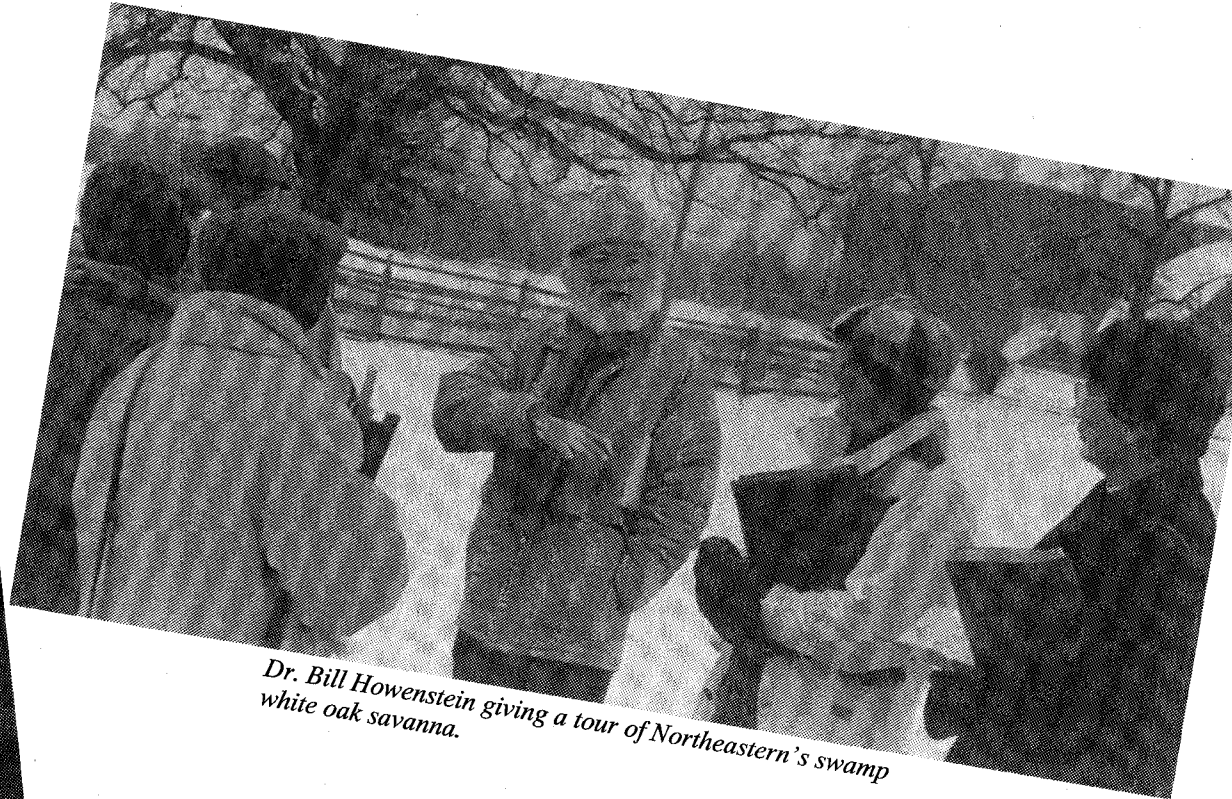
Laurel Ross talked about seeds. **Robert Lonsdorf** presented Open Lands Project greenway corridor ideas. **Lee Hansen**, **Chris Urban**, **Rich Gabriel**, and **Karen Holland** spoke on people related topics. **Brian Seinfeld** demonstrated hand tool use in exotics removal. And **Tor Faegre** began gathering a list of savanna locations in the poster session.

The conference was sponsored by The Nature Conservancy, the U.S. Environmental Protection Agency, Northeastern Illinois University, and the University of Wisconsin-Stevens Point, and 30 co-sponsors including the Forest Preserve District of Cook County and, of course, the North Branch.

All in all, a stunning effort on the part of North Branch Prairie Project volunteers!



Steve Packard and Keynote Speaker Elliott Norse prepare for the opening address.

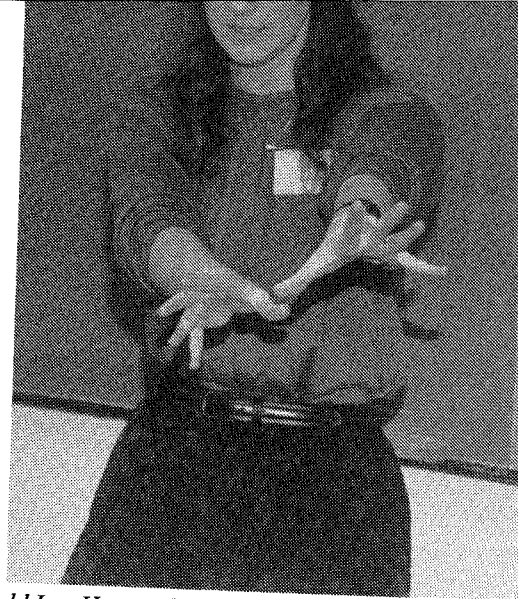


Dr. Bill Howenstein giving a tour of Northeastern's swamp white oak savanna.

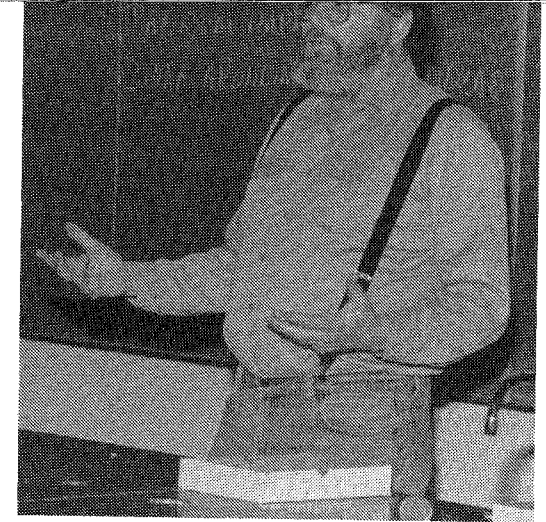




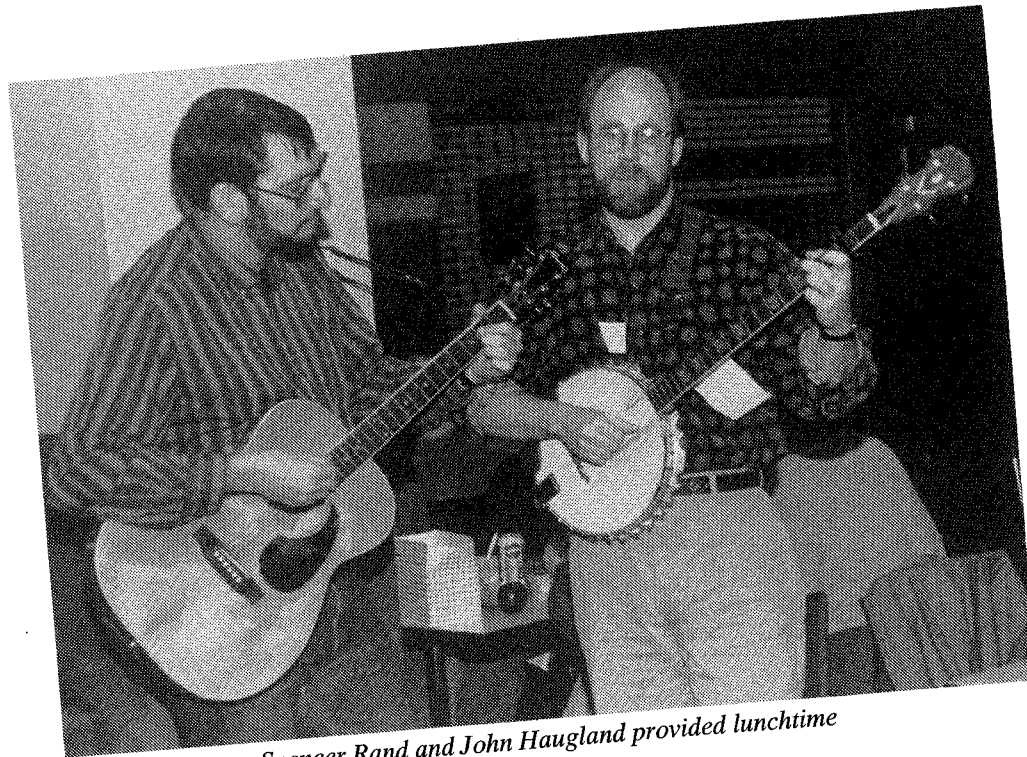
Rick Gabriel during his conference seminar.



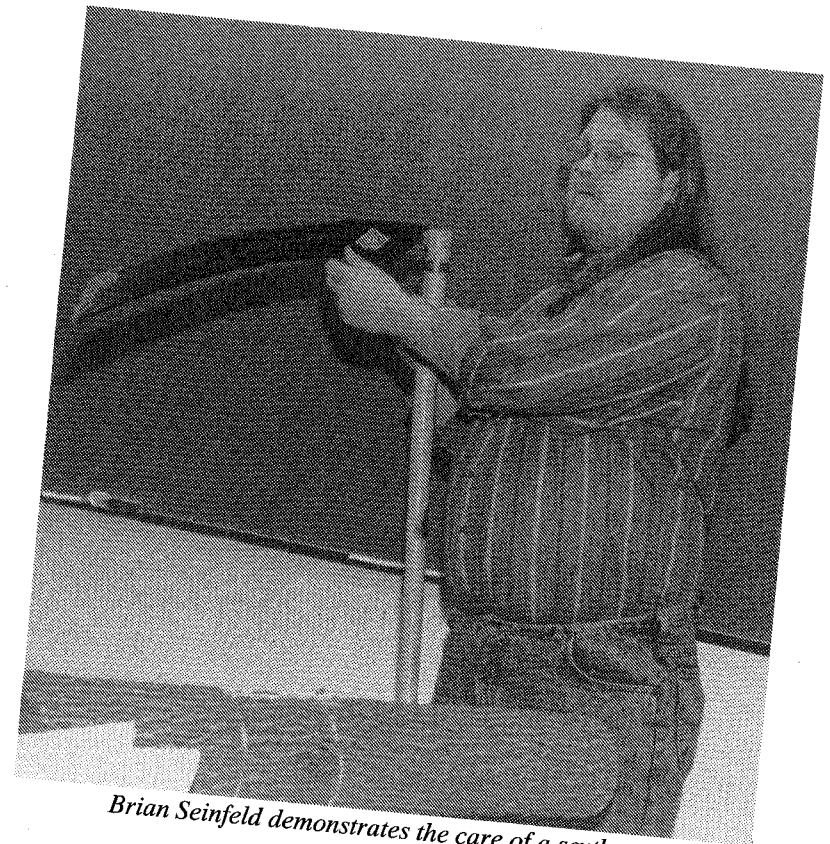
Could Lee Hansen be putting a spell on her conference audience?



Jerry Sullivan making a point during his seminar on savanna birds.



Spencer Rand and John Haugland provided lunchtime entertainment.



Brian Seinfeld demonstrates the care of a scythe.

Photos courtesy of Mary Hanlon.

**SUMMER WORDS OF WISDOM FROM
THE BRUSHMEISTER:**

Continued from page 1

If you can't lop easily with the old one-two, this sapling needs harsher measures—a bow saw. Either leave this sapling for a stronger lopper or find someone to saw it. This will prevent injury to your muscles and knuckles and to the lopper itself.

Use caution when lopping thorny material to prevent small nicks to your skin or tears to your clothing (you should be wearing jeans, long sleeves, and gloves). BE SURE of what's in the jaws of the lopper BEFORE closing the handles with a swift compressing action.

Now that you have the basics of lopper use and safety, we can proceed to Lopper Interpretation.

I have noticed many styles of attacking saplings with the lopper. Most ingenious is the *Piercing Technique*. The lopperer clears a path wide enough for himself, making a straight line into the mass of brush before him. I have yet to determine if he is attempting a quicker way to the brushpile or the parking lot.

The technique of choice is the *Front Line Attack*. Usually a group activity, this way is best described as a wall of fire moving in one direction obliterating anything in its path.

For those preferring a solo style, *Radius Removal* is just the thing. After each cut, step to the left, using the area behind you to pile the cut brush. Keep moving in an ever increasing circle. This technique looks quite impressive to newcomers.

Weed Extraction Equipment Review

The time has come for the North Branch to bring its weed extraction equipment out of winter storage. Just as a reminder,

North

Branch

Prairie

Project

**P.O. Box 74
Northbrook, IL 60065**

**ADDRESS CORRECTION
REQUESTED**

*The North Branch
Prairie Project is
a cooperative effort
involving The Nature
Conservancy, the
Chicago Audubon
Society, and the Sierra
Club, Chicago Group.*

*We manage these sites
as volunteers for the
Forest Preserve District
of Cook County.*

before extracting any weeds apply a fresh leather sheath* to the weed extracting tool.

The proper use of weed extraction equipment is as follows:

1. Open the weed extraction tool to the largest setting.
2. Close it around the base of the weed you are attempting to extract.
3. Extract the weed with a firm and steady tug.
4. Hold extracted weed over the special transportable container.
5. Open weed extracting tool again and let the extracted weed fall into the container.
6. Repeat.

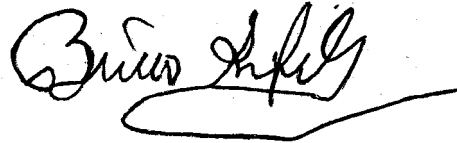
After the workday be sure to remove the leather sheath allowing the weed extraction equipment to dry. If inclined, wash it with mild soap and water. Finally, apply conditioning oil (Jergens, Vaseline Intensive Care, etc.—there are many good brands available). This will help extend the life of the equipment thereby allowing the North Branch to save prairies and savannas with reduced maintenance cost.

**Note: When using weed extraction equipment on Wild parsnip, be sure to sheath it ENTIRELY IN CLOTH.*

As you enjoy the rebirth of our prairies and savannas, keep the lopping safety tips and instructions for use and the weed extraction tips in mind.

Thank you for your time.

THE BRUSHMEISTER



Non-Profit
Organization
U.S. Postage Paid
Permit No. 6632
Chicago, Illinois